

Further Tightening of Safe Management Measures (SMMs)

With effect from 16 May to 13 Jun 2021 (both dates inclusive)



Employers must exercise heightened vigilance at the workplace.

Work from home as a default.

- No cross deployment of staff.
- Social gatherings at the workplace are not allowed.
- Employers should continue to stagger start times of employees who need to return to the workplace and implement flexible working hours.



Dining in is not permitted at all F&B establishments.

- F&B establishments can only operate for takeaway and / or delivery.



Affected businesses will receive 50% Jobs Support Scheme (JSS) support during this period.

One month of rental waiver for hawker stall and coffeshop tenants of Government agencies.



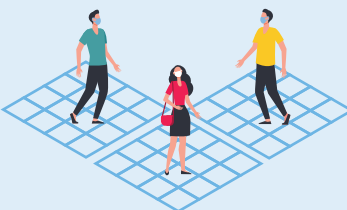
Indoor activities that require masks to be taken off are not permitted.

- Establishments, including personal care and wellness services, can continue to operate, but activities that require unmasking are not allowed (e.g. facials, sauna).
- Medical services which require the removal of masks can continue to operate.



Tighter capacity limits for MICE events and live performances.

- Events can have up to 100 pax with Pre-Event Testing (PET) and up to 50 pax without PET.
- No singing and no wind instruments for live performances.
- Masks have to be worn at all times.



Occupancy limit for malls, showrooms and large standalone stores will be one person per 16 sqm of Gross Floor Area (GFA).

- Retail establishments should cancel all events, promotions or sales that will generate crowds at their premises.



Operating capacity limit for attractions, cruises and museums will be reduced from 50% to 25%.

- The maximum capacity for shows, both indoor and outdoor, will be capped at 100 pax with PET and up to 50 pax without PET.

For COVID-19 advisory for businesses:
www.enterprisesg.gov.sg/covid-19

For tourism industry-specific advisories:
www.go.gov.sg/stbsmm

For prevailing SMM and sector-specific requirements:
www.go.gov.sg/SMM

<https://covid.gobusiness.gov.sg/safemanagement/general>
("Safe Management Requirements")

For info on other support measures:
covid.gobusiness.gov.sg

Queries?

Call 6898 1800. The Enterprise Infoline will operate from:
8.30am – 9.00pm (14 May 2021)
8.30am – 12.30pm (15 May 2021)
8.30am – 5.30pm (Mon – Fri)
*Closed on public holidays



"COVID-19 Chat for Biz" chatbot
Get real-time responses to your queries now!